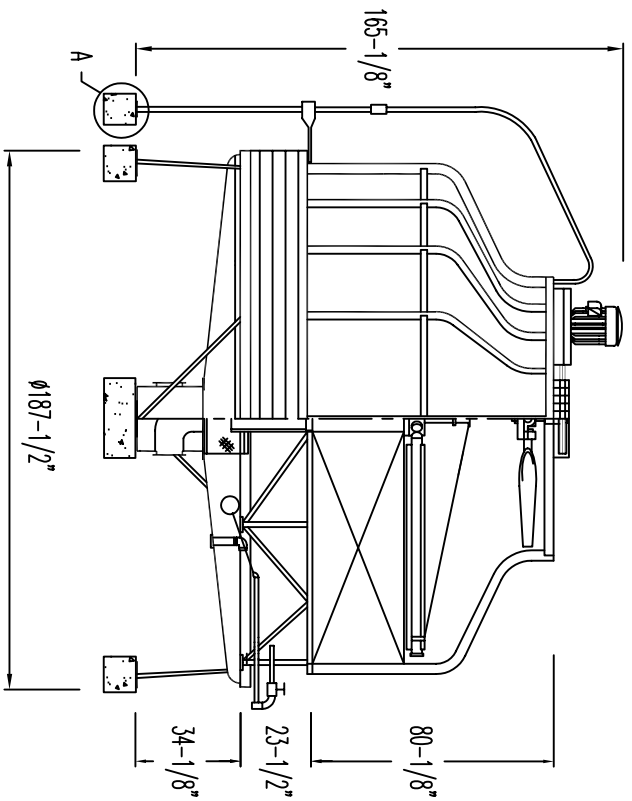
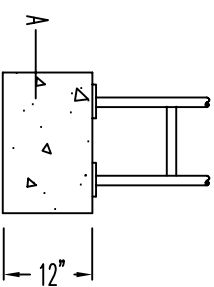
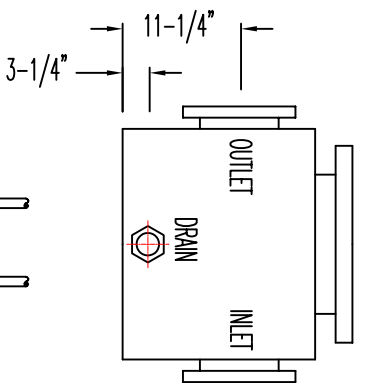


TOWER FOUNDATION



TOWER OVERALL DIMENSION



LOADING POINT (lbs)	TOWER WEIGHT (lbs)	
	NET WEIGHT	OPERATING WEIGHT
STAND	1301	8549
TANK	3345	
PIPEWORK		
OUTLET	8"	
INLET	8"	
OVERFLOW	3"	
DRAIN	3"	
AUTOMATIC MAKE-UP	1-1/4"	
MANUAL MAKE-UP	1-1/4"	

- NOTES:
1. THE COOLING TOWER MUST BE LOCATED AT SUCH DISTANCE AND DIRECTION TO AVOID THE POSSIBILITY OF CONTAMINATED TOWER DISCHARGE AIR BEING DRAIN INTO BUILDING FRESH AIR INTAKES
 2. ANCHOR BOLT BY OTHERS.
 3. CONTINUING ENGINEERING RESEARCH RESULTS IN STEADY IMPROVEMENTS. THEREFORE, THESE SPECIFICATIONS AND DATA ARE SUBJECT TO CHANGE WITHOUT NOTICE. CONSULT WITH FACTORY FOR CURRENT CERTIFIED DIMENSIONS.

APPROVED	KIM LIN	06.27.2007	DWG TITLE:	
CHECKED	NOJIN	11.06.2007	DWG DETAIL:	PCT-350
DRAWN	HUANG	06.27.2007	DWG NO.:	AFP-0350-0
ITEM	ZENG	06.26.2007	BY	DATE
DO NOT SCALE				
PROTEC COOLING TOWERS, INC.				